

SOVORUN

REVOLUTIONIZE YOUR INDUSTRY

Stay ahead with technology that's
easy and impactful.



EDGESENSE



Our Solutions

Energy Management System

- Optimize energy consumption and reduce costs.
- Achieve ISO 50001 compliance.
- Real-time energy monitoring and analysis.
- Water Management System.

Efficient Water Usage & Leakage Detection.

- Real-time monitoring for sustainability.
- Advanced analytics for proactive water management.

HVAC Optimization

- Improve HVAC efficiency with smart controls.
- Reduce energy consumption and operational costs.
- Real-time monitoring and predictive maintenance.

Predictive Maintenance

- Minimize downtime with predictive analytics.
- Real-time alerts for potential failures.

Ambient Monitoring

- Ensure environmental compliance with real-time data.
- Monitor temperature, humidity, and air quality.

Steam Trap Monitoring

- Improve steam system efficiency.
- Detect faulty steam traps and prevent energy losses.
- Real-time monitoring and alerts.

Busbar Monitoring

- Ensure electrical safety and reliability.
- Monitor current, voltage, and temperature in real-time.
- Predictive analytics to prevent failures.

Plant Digitalization

- Transform your plant into a smart factory.
- Integrate IoT solutions for real-time data and analytics.
- Enhance operational efficiency and decision-making.

MPCB Dashboards

- Monitor and control motor protection circuit breakers.
- Real-time data for enhanced safety and performance.
- Comprehensive dashboard for easy monitoring.



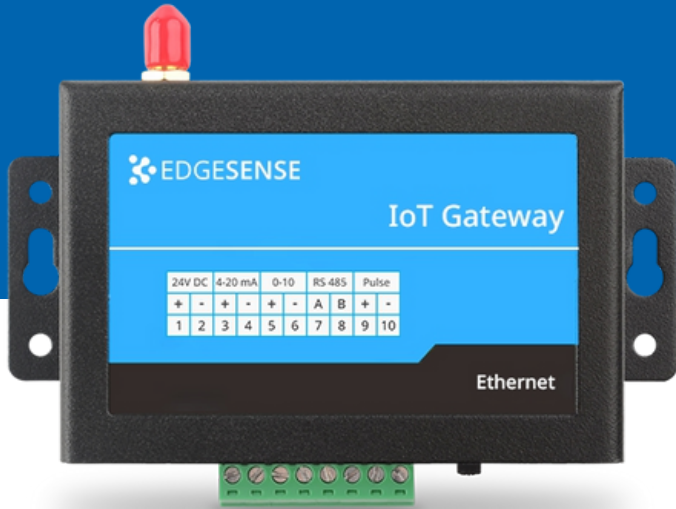
About EdgeSense

EdgeSense was born from a desire to transform industrial operations through innovative technology. We envision a future where data-driven insights and seamless connectivity would revolutionize how industries function. Starting as a small tech startup, we focused on developing robust IoT solutions that address real-world challenges faced by industries.

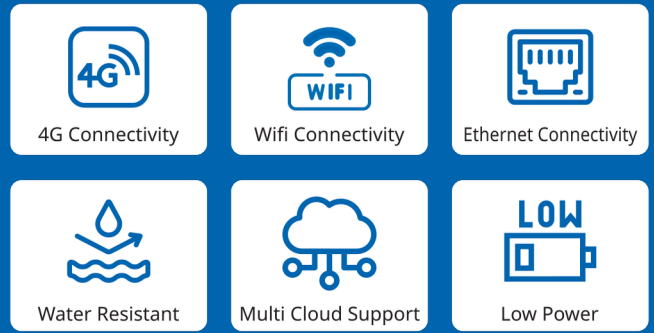
Our mission is to empower industries with innovative IoT solutions that drive efficiency and sustainability. By leveraging cutting-edge technology, we aim to transform operational processes, optimize resource utilization, and reduce environmental impact.

EdgeNode Gateway

Explore our Smart Gateway devices for seamless data connectivity and integration with sensors such as energy meters, PLCs, DCS, OPC, flow meters, and vibration sensors.



EdgeNode Gateway



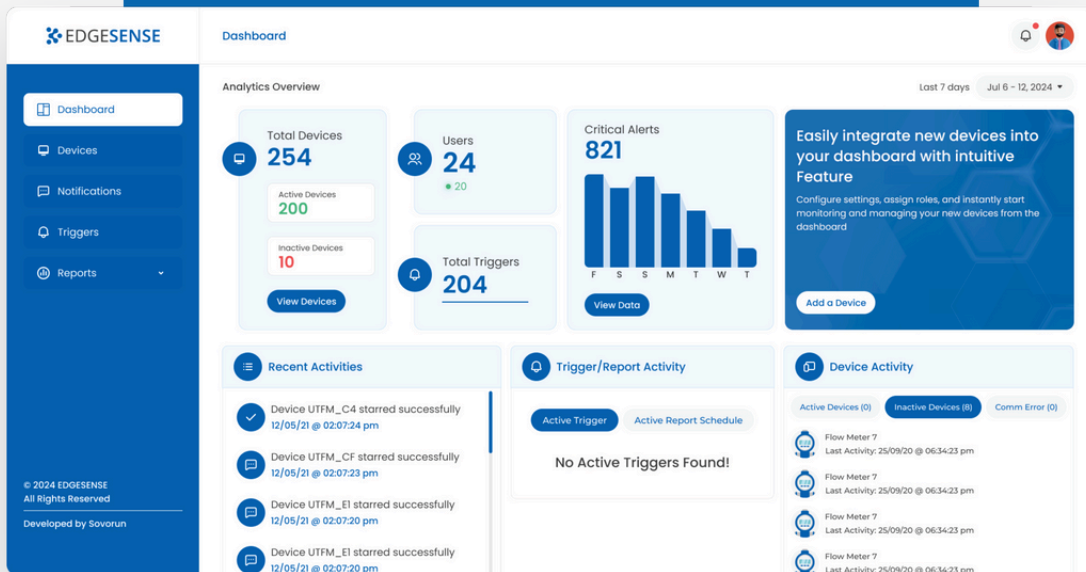
Technical Specifications

Analog inputs	2-channel 4-20 mA, 1-channel 0-10V
Digital Inputs	2 Digital Inputs (24V tolerant)
Digital Outputs	2 Latch Relay Outputs
Communication	Serial Port: RS-485: 2 wire Protocols: Modbus RTU & TCP, MQTT, JSON, Network Time Protocol Wireless Connectivity: WiFi
Firmware Update	FOTA (Firmware Over-the-Air)
Power	Voltage: 24V DC Power: 6 watt (Max)
Operating Conditions	-30°C ~ +80°C (-22°F ~ +176°F), < 90% RH, Startup should be done at above -30°C
Protection	Over Voltage Protection, Reverse Voltage Protection, Short Circuit Protection
Electrostatic Discharge	+/-4kV EN 6100-4-2
Surge Protection:	+/- 1 kV-EN 61000-4-5

EdgeVision

Power your Industry 5.0 Vision with EdgeVision

EdgeVision is a powerful software platform that drives digital transformation for enterprises.



Real-Time Data Monitoring

EdgeVision offers continuous monitoring of your industrial processes, providing instant access to critical data.

Advanced Analytics

Our platform uses sophisticated algorithms to analyze your data inefficiencies & actionable insights.

Customizable Dashboards

Customize views and reports to focus on the most critical metrics for your operations, making data-driven decision-making more accessible.

SOVORUN

Over the years, our dedication to excellence and innovation has propelled us to the forefront of the IoT industry. Today, EdgeSense stands as a trusted partner for businesses looking to optimize operations, enhance productivity, and achieve sustainable growth.



APPLICATIONS



Smart Industry



Other Wireless
Sensing Application



Smart Buildings



Smart Agriculture



Smart Cities



Environmental
Monitoring

✉ sales@sovorun.com

☎ +91 89715 41432

🌐 www.sovorun.com

602-B, Virani Business Centre, Opp. Bharat Gear, Shil.,
Thane-400612, MH, IN.

